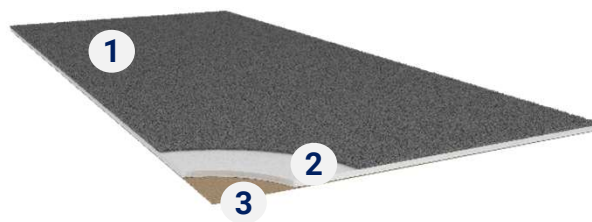


## DESCRIPTION

Textile protection tiles for social events.

1. Flat needle punched textile tile, 100% polypropylene
2. Latex
3. White polyolefin backing, leaves no marks on the sports flooring



## PROPERTIES

## STANDARDS

## PROTECTILES

### DECLARATION OF PERFORMANCE

0120-088-DoP-2022-04

### CLASSIFICATION

Type of flooring	EN 1307	Polypropylene textile tile on polyolefin underlayer
------------------	---------	---

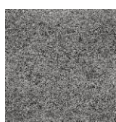
### TECHNICAL CHARACTERISTICS

Total thickness	ISO 1765	5.2mm
Total weight	ISO 8543	3.1kg/m <sup>2</sup>
Width	EN ISO 24342	1m
Length	EN ISO 24342	2m

### TECHNICAL PERFORMANCES

Dimensional stability	EN 986	<0.2%
Reaction to fire	EN 13501-1	Bfl-s1*
Acoustic absorption	EN ISO 354	$\alpha_w = 0.15$ (H)
Impact noise reduction	EN ISO 717-2	19dB
Antistatic properties	ISO 6356	$\leq 2kV$
Thermal resistance	ISO 8302	0.08 m <sup>2</sup> K/W
Formaldehyde	EN 717-1	No formaldehyde
Pentachlorophenol	EN 12673	No pentachlorophenol

## CHOOSE YOUR COLOURS



Light grey



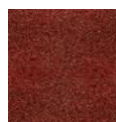
Anthracite



Dark brown



Night blue



Red



PTHALATE  
FREE



≤ 100 µg/m<sup>3</sup>  
OPTIMAL INDOOR  
AIR QUALITY



5  
years  
GUARANTEE  
COMMERCIAL  
USE



EMISSIONS DANS L'AIR INTÉRIEUR  
A+  
A+ A B C

\* On cement

Installation and maintenance instructions available on the website

Technical data in force as from the date of publication (04/2024). The values above correspond to laboratory test (no in situ test) and are subject to modifications for the benefit of further improvement. For more detailed technical information, please contact Tarkett Sports. Colours of the products shown in the photos or samples are indicative only. There may be differences in colour, gloss and embossing structure between the products sold and photos or samples.

<https://eu.tarkettsportsindoor.com/>