

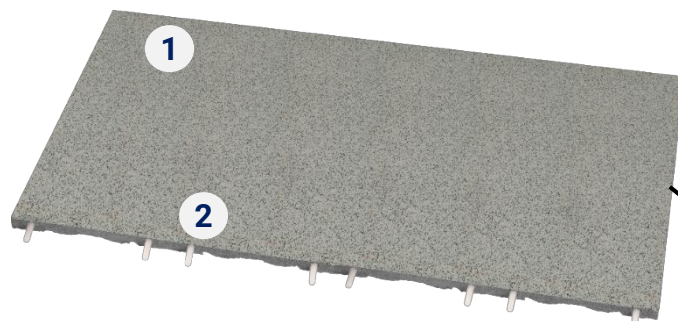
# DROPTILE SPECKLE

Rubber tiles



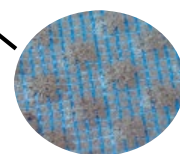
## PRODUCT PROFILE

- 1 3-layer composition, with a high density top layer.
- 2 Connector pins (8 per tile)



**Tile:**  
1000 x 500mm

**Thickness:**  
30mm

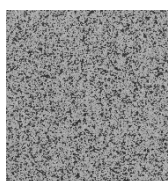


*Reinforced backing*

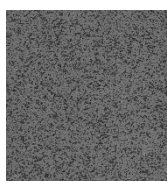
## KEY FEATURES

- Superior impact resistance **up to 200kg\***
- Acoustic performance up to **24dB**
- Fire performance **Cfl-s1**
- Increased **design** possibilities
- Adhesive-free for **easy installation**

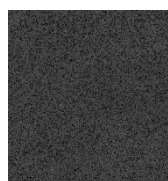
## 5 COLORS AVAILABLE



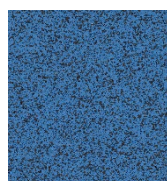
Light grey  
430009101



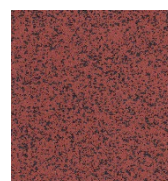
Medium grey  
430009102



Dark grey  
430009103



Blue  
430009104



Red  
430009105

# DROPTILE SPECKLE Rubber tiles



**Droptile Speckle (30.0mm)** is the ideal solution **for all types of free weights areas**, for the **toughest of workouts** with increased design possibilities.

It provides **durability and maximum vibration absorption**. It provides the **perfect level of support for weights and heavy loads up to 200kg\***, without showing signs of wear thanks to its 30mm, 3-layer composition, with a high density top layer.

It offers **acoustic reduction of 24dB** and **Cfl-s1 fire performance**.

**Droptile Speckle (30.0mm)** has **easy and secure installation** thanks to its loose laid installation with connector pins and is **easy to maintain** thanks to its high surface density.

**Droptile Speckle** has **A+ emission rate** and comes with a **3-year warranty**.



## RECOMMENDED APPLICATIONS



Cardio



Light  
weights



Moderate  
Weights



Heavy  
Weights



Functional  
Fitness



Reinforcement  
Equipment



Crossfit

\* falling weights from a height of 2m